

Issues, challenges and operationalization of the use of a collaborative approach towards vulnerable children: the exemple of the AIDES initiative

(Intersectorial Action for Child Development and Welfare)

AIDES in the original French

Claire Chamberland, principal researcher
Danielle Lessard, coordonator
Carl Lacharité, co-researcher

Workshop Plan

- 1) The AIDES initiative: outcomes expected, objectives and means;
- 2) Implementation of the projet
- 3) Challenges and issues: exploring solutions

AIDES : Outcomes expected

FINAL OUTCOME

- ❖ To ensure children's safety, encourage their optimal development, and contribute to improving their future;

INTERMEDIAIRE

- ❖ To support parents in the exercise of their parental role and responsibilities;

PROXIMAL

- ❖ To encourage parents' participation and collaboration throughout the intervention/care process, particularly in decisions concerning the family;
- ❖ To promote a climate of cooperation and collaboration between all practioners.

AIDES: Objectives

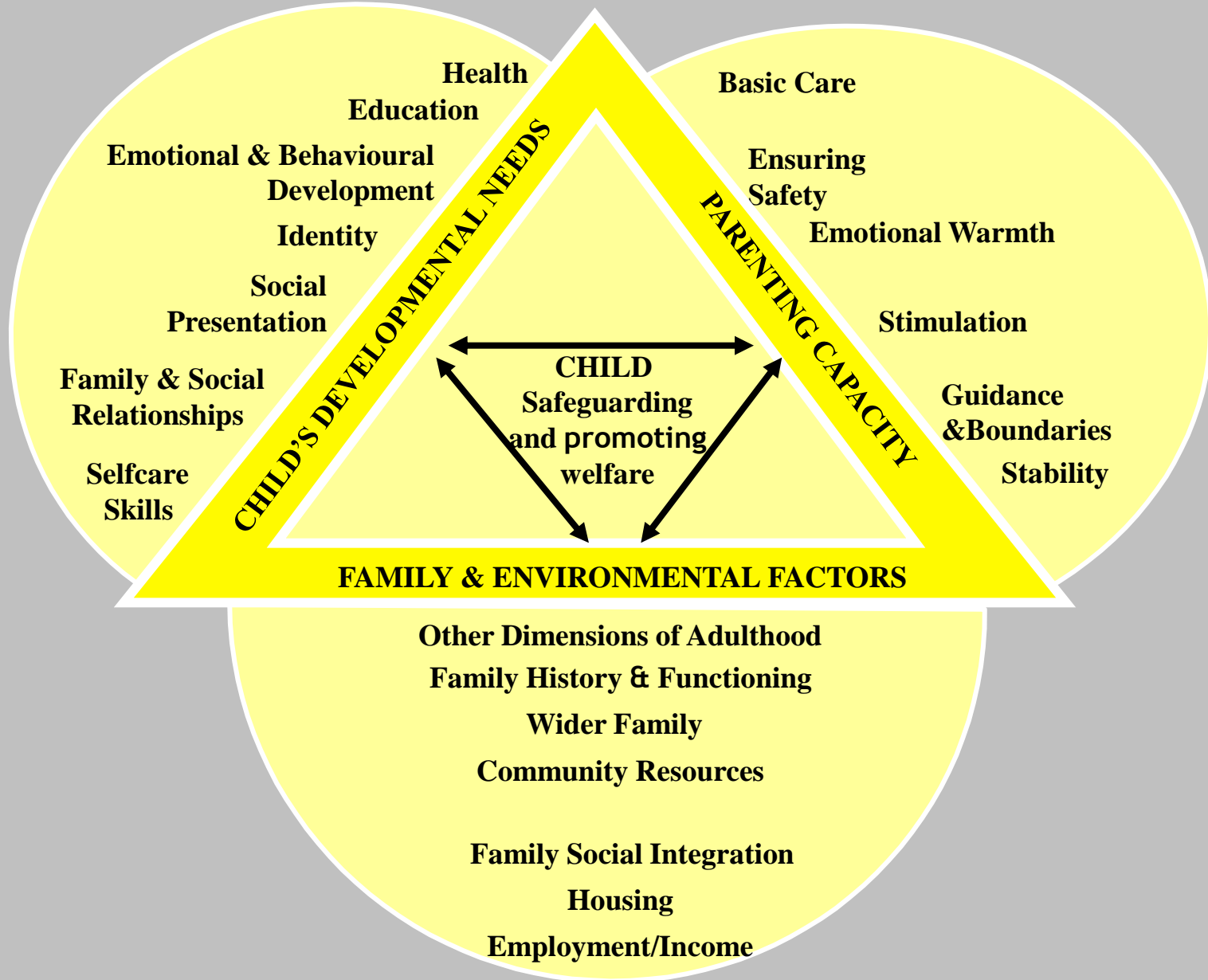
- ❖ An analysis of the child's developmental needs;
- ❖ A fully committed parent as partner;
- ❖ Collaborative process along all intervention stages;
 - A shared assessment of the situation;
 - Commun planning;
 - Implementation, follow-up and review.
- ❖ Collective responsibility for results.

AIDES: Means

- ❖ British assessment framework
- ❖ CABE (children's needs analysis booklet)
- ❖ Participative approach
- ❖ Action plan

ASSESSMENT FRAMEWORK

Department of Health et al. (2000). Framework for the Assessment of Children in Need and their Families. London: the Stationery Office.



CABE

(children's needs analysis booklet)
(translation and adaptation of CORE Assessment)

- ❖ Analysis tools related to the reference framework (Chamberland et al., 2005)
- ❖ Divided according 6 groups of age
- ❖ Objectives
- ❖ Analysis

Participative approach with family members (Lacharité, 2007)

- ❖ Bringing their knowledge and experience, their concerns, their intentions, and their initiatives regarding the well-being of their children.
- ❖ Within an ecosystemic understanding of the children's development.
- ❖ Through the joint identification of professional actions issuing from this understanding and which harmonize with the positive initiatives of the children's entourage.

Action plan

Intervention plan (PI) et plan de service individualisé (PSI)
(Lemay, 2006)

IP

- ❖ Taking into account the particular mandate of a single establishment, identify the *specific objectives* and the *concrete means* required to bring about the desired change in the child.
- ❖ Coordonate intervention by practitioners within the same establishment.

ISP

- ❖ Identify the *general objectives* to be reached to fulfill the child's needs, and the actions or services required to respond to them.
- ❖ Plan and coordonate the provision of services by the *different establishments*.

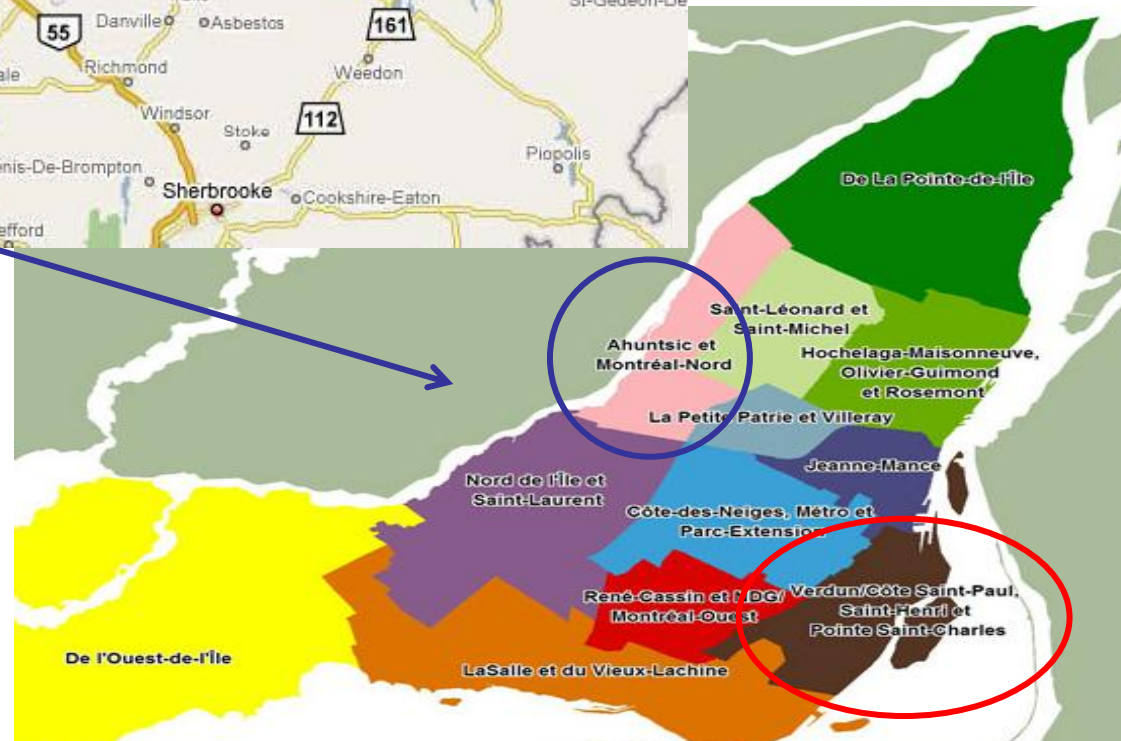
The child and his family in the AIDES project

- ❖ Must be *under seven years old* at the beginning of the intervention;
- ❖ The family situation must have deteriorated sufficiently to warrant *significant concern about the child's development*, i.e., it is reported to Youth Protection System (CJ) or is a high-priority file at the health and social service agencies (CSSS);
- ❖ The child or his parents is/are receiving or will receive the services *of at least two establishments*;
- ❖ The chosen orientation is to keep the child in his natural milieu.

Geographical situation of experimental and control territories for Montréal and Mauricie / Centre-du-Québec area



Experimental
Control
groups



2003 to 2008...until 2011

DESIGN, TRY-OUT, AND IMPLEMENTATION

- ❖ **Inventory of collaboration initiatives among vulnerable families (in Quebec and elsewhere)**
- ❖ **Formation of a group for reflection, review**
 - Partners: case workers, managers, researchers (CJ and CSSS)
 - Activities (1 year): 4 meetings and 1 seminar with U.K. representatives
 - Objectives: appropriation of reference framework, joint construction of intervention procedure
 - Tasks:
 - ❖ Choice of means: Core assessment, participative approach with parents, ISP process
 - ❖ Adaptation to Quebec context: reference framework, CAGE
 - ❖ Creation of tools: small poster, series of charts
 - ❖ Construction of training content

2003 à 2008

DESIGN, TRY-OUT, AND IMPLEMENTATION

- Agreements signed with the partners CJ Montreal/North and CSSS Ahuntsic/Montreal-North for the try-out period (objectives sought, roles and responsibilities).
- Creation of a local coordination committee
 - Awareness of the initiative: information and training sessions (2 days) and follow-up meetings
 - Test implementation among a few families in territory of CSSS Ahuntsic/Montréal-Nord (2006)
 - Meeting with service providers to know their points of view
 - Enhancement of material and support activities
- Simultaneously in the Mauricie / Centre-du-Québec area - promoting the approach in the assessment framework of PAPFC

2003 to 2008...until 2011

DESIGN, TRY-OUT, and IMPLEMENTATION

of the initiative... but **also a research project** (n=230 participants)

- ❖ Adhesion of the different milieus (implementation and assessment)
- ❖ Formation of advisory and assessment committees
- ❖ Ethical approval (university and practitioner milieus)
- ❖ Identification of service providers (information and awareness activities concerning the initiative)
 - 1) *Support the use of the reference framework and the CAFE in the analysis of the child's needs.*
 - 2) *Encourage development of competencies linked to the participative approach in follow-up with families.*
 - 3) *Involve network partners in the child's case and update the ISP.*
- ❖ Recruitment of families
- ❖ Evaluation of the implementation and effects (pre- and post-test)

2003 to 2008...until 2011

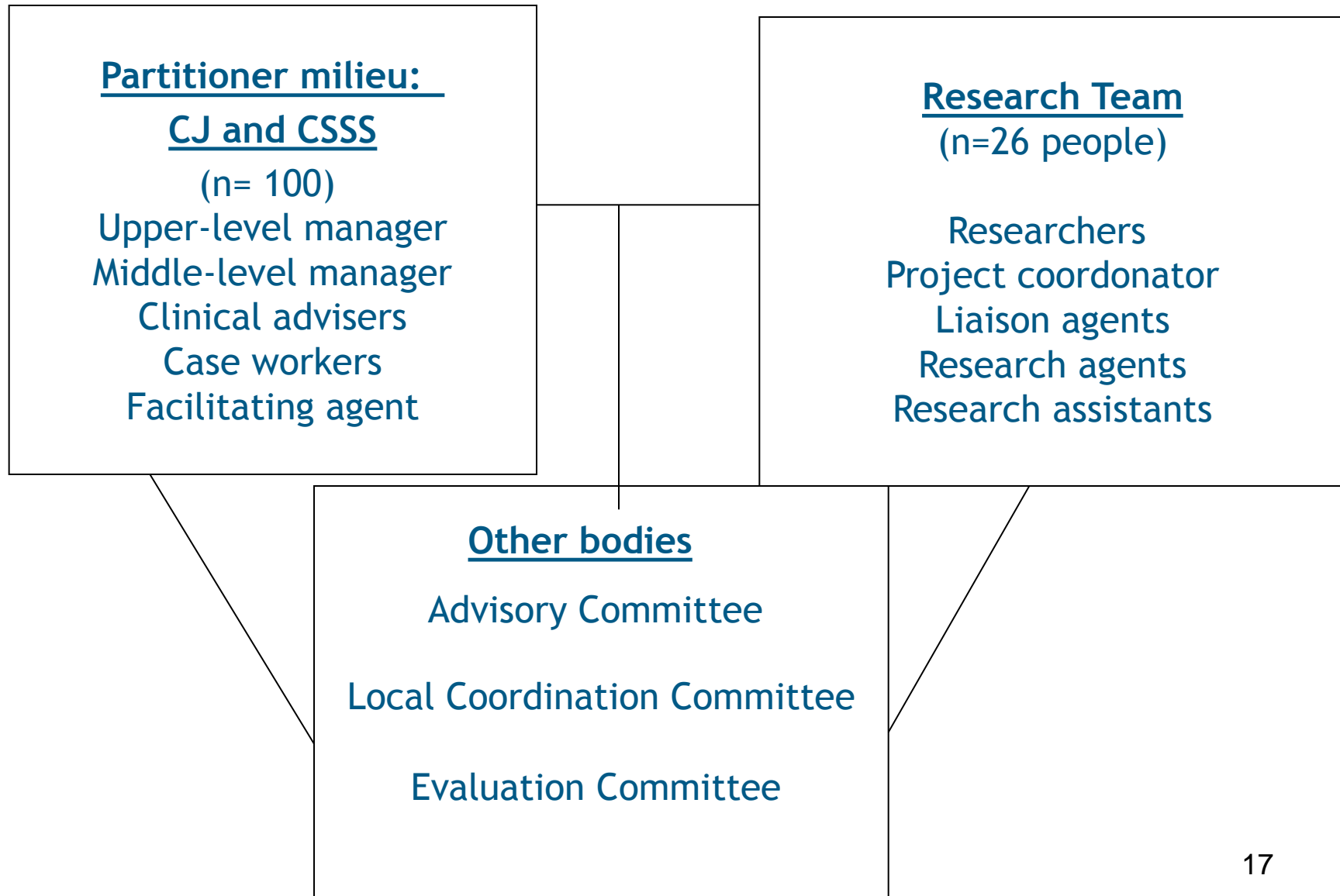
CONCEPTION, TRY-OUT AND IMPLEMENTATION

MONTREAL	MAURICIE/CENTRE-DU-QUÉBEC
<p style="text-align: center;"><u>Experimental Group</u> (55 children and their families)</p> <p style="text-align: center;">Youth protection system (Montreal/North)</p> <p style="text-align: center;">Health and social service agency (Ahuntsic/Montreal-North)</p>	<p style="text-align: center;"><u>Experimental group</u> (60 children and their families)</p> <p style="text-align: center;">Youth protection system</p> <p style="text-align: center;">Health and social service agencies (Énergie, Drummond, Arthabaska-Érable)</p>
<p style="text-align: center;"><u>Control Group</u> (55 children and their families)</p> <p style="text-align: center;">Youth protection system (Montreal/West)</p> <p style="text-align: center;">Health and social service agency (South-West Verdun)</p>	<p style="text-align: center;"><u>Control Group</u> (60 children and their families)</p> <p style="text-align: center;">Youth protection system</p> <p style="text-align: center;">Health and social service agencies (Nicolet/Bécancour, Trois-Rivières / Cap-de-la-Madeleine, Maskinongé)</p>

Assessment/Review of the implementation of the AIDES initiative and its effects

		Pre-test	Stages of intervention		Post-test
Implementation/process evaluation		<u>Characteristics of the children and their family situations</u> Target group n=115 children/families Peer group N=115 children/families	Centering on the child's needs Analysis of child's case Target group n=20 cases Peer group n=20 cases	Participation/collaboration Telephone interviews Target group n=20 parents Peer group n=20 parents Target group = 15 service providers Peer group = 15 service providers	<u>Characteristics of the children and their family situations</u> Target group N ≥ 100 children/families Peer group N ≥ 100 children/families
		<u>Practice conditions</u> Telephone interviews Target group n=15 service providers Peer group n=15 service providers Focus group Target group n=4 Focus group (8-12 people per focus group)			
		Pre-test	Stages of intervention	Post-test	
Impact evaluation	<u>Proximate</u>		Parental perceptions <ul style="list-style-type: none"> - quality of aid practices employed by pivot service provider - quality of collaboration with pivot service provider - degree of control in decisions regarding services for their child and his/her family <u>Parent questionnaire</u> Target group n=115 parents Peer group n = 115 parents		
	<u>Intermediary and ultimate</u>	-Development of child -Victimization of child -Adaptation to parental role and exercise of parental responsibilities -Family environment Target group n=115 children/families Peer group N=115 children/families		<ul style="list-style-type: none"> - Development of child - Victimization of child - Adaptation to parental role and exercise of parental responsibilities - Family environment Target group N ≥ 100 children/families Peer group N ≥ 100 children/families	

The actors in the AIDES project (target group)



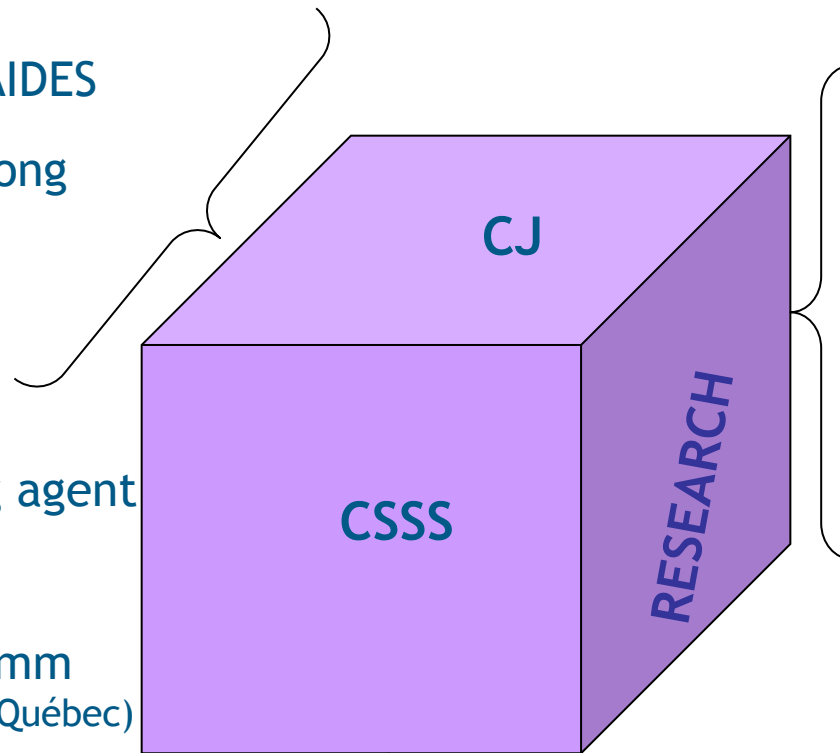
Challenges and issues

Chosen approach
in harmony with AIDES

Raise interest among
case workers and
accompany them

AIDES training

Asset: facilitating agent
(Montréal),
clinical counselor
and PAPFC programm
(Mauricie / Centre-du-Québec)



Support chosen
approach

Gather research data

Conciliate deadlines

Population-oriented approach

Missing element in tools

Asset: EIJ coordonator (Montréal)
PAPFC programm (Mauricie / Centre-du-Québec)

Challenges and issues

Establishing the link between the AIDES approach and institutional goals

- Empowerment and mobilization of parents;
- Relational/relation authority approach;
- Collaboration with network partners;
- Carrying out the PI and the PSI
- Evaluation of families' needs and best practices

Other challenges...

- Providing the services once the needs are identified;
- Widening the partnership to the community network;
- Looking after the base of the triangle.

To join us

Claire Chamberland

claire.chamberland@umontreal.ca

Danielle Lessard

danielle.lessard@umontreal.ca

Carl Lacharité

Carl.Lacharite@uqtr.ca